



Using Data to Create Urgency

RNN Symposium at WMU

March 8, 2017

Doug Greer, OAISD

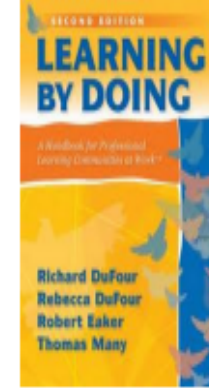
Twitter @Doug_Greer4

Our Purpose this Session:

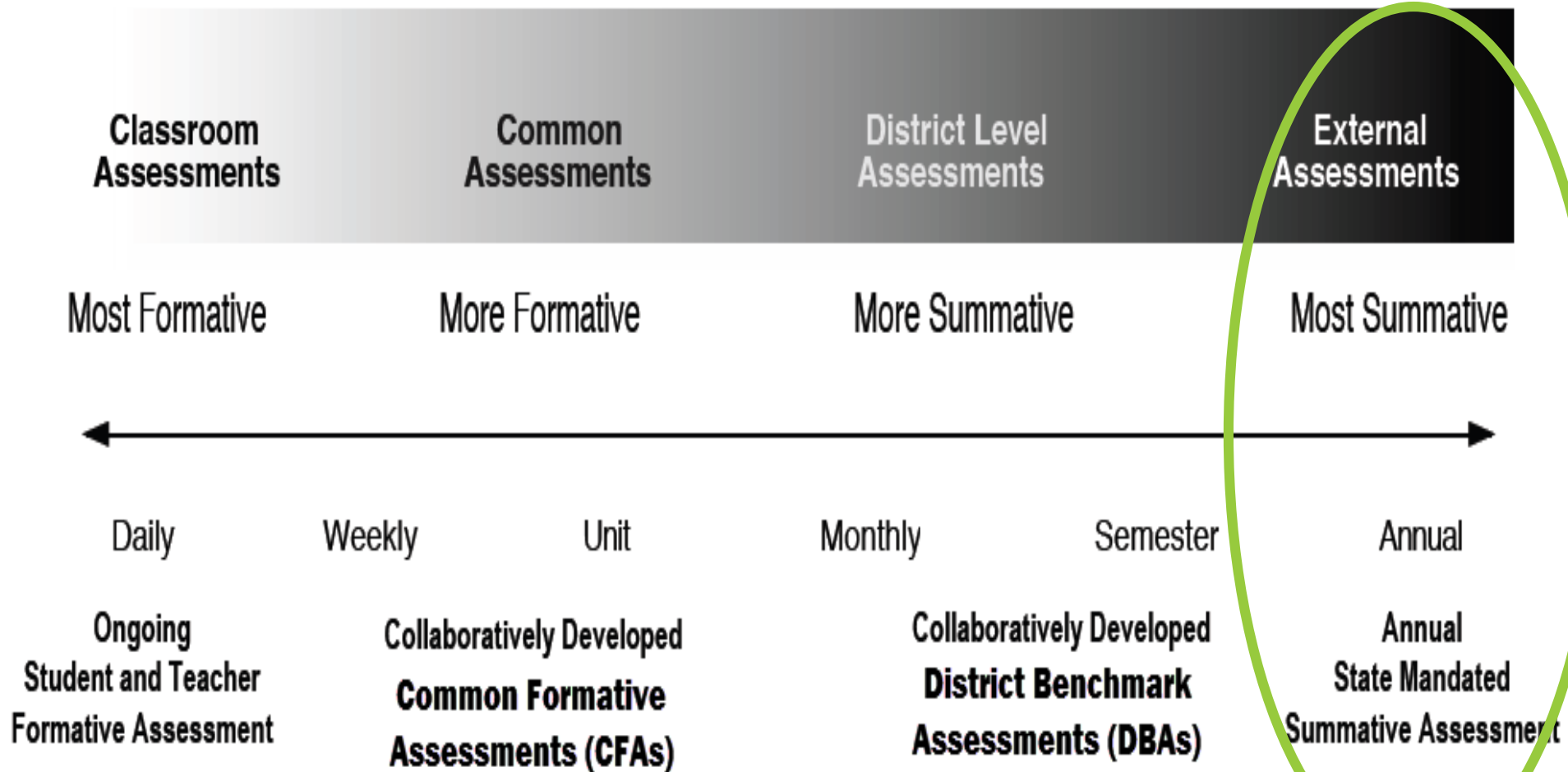
- ▶ Why we should not look at the state average?
- ▶ How has the RNN found looking at data differently creates a sense of urgency?
- ▶ You will gain access to an interactive tool used by the RNN to both identify schools and measure progress compared to similar schools.
- ▶ You will also learn how to compare to the highest performing schools and set new targets based on similar schools performing better.



A Balanced and Coherent System of Assessment



Presented by
Dr. Thomas Many
9/26/13 @ MAS/FPS



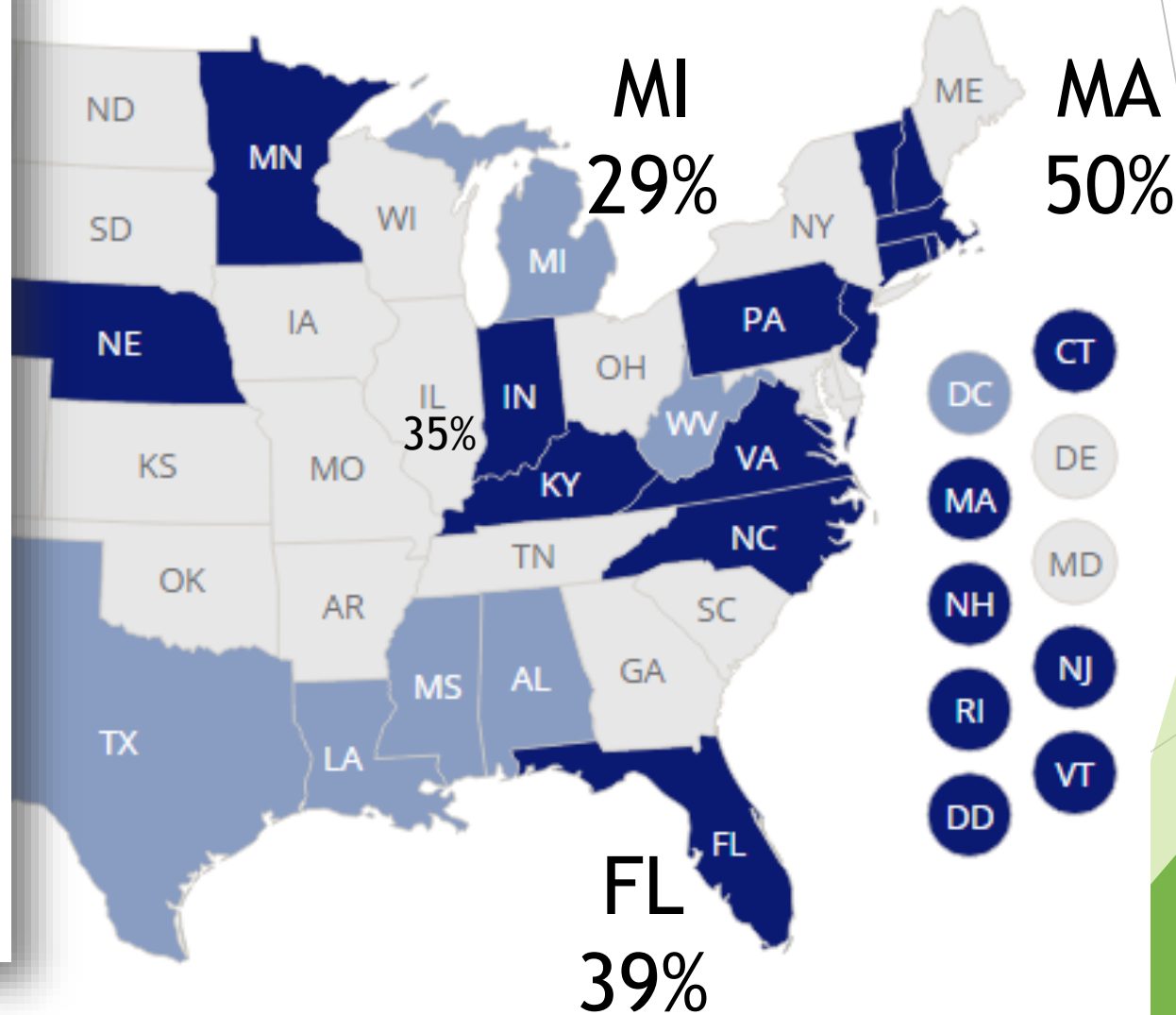
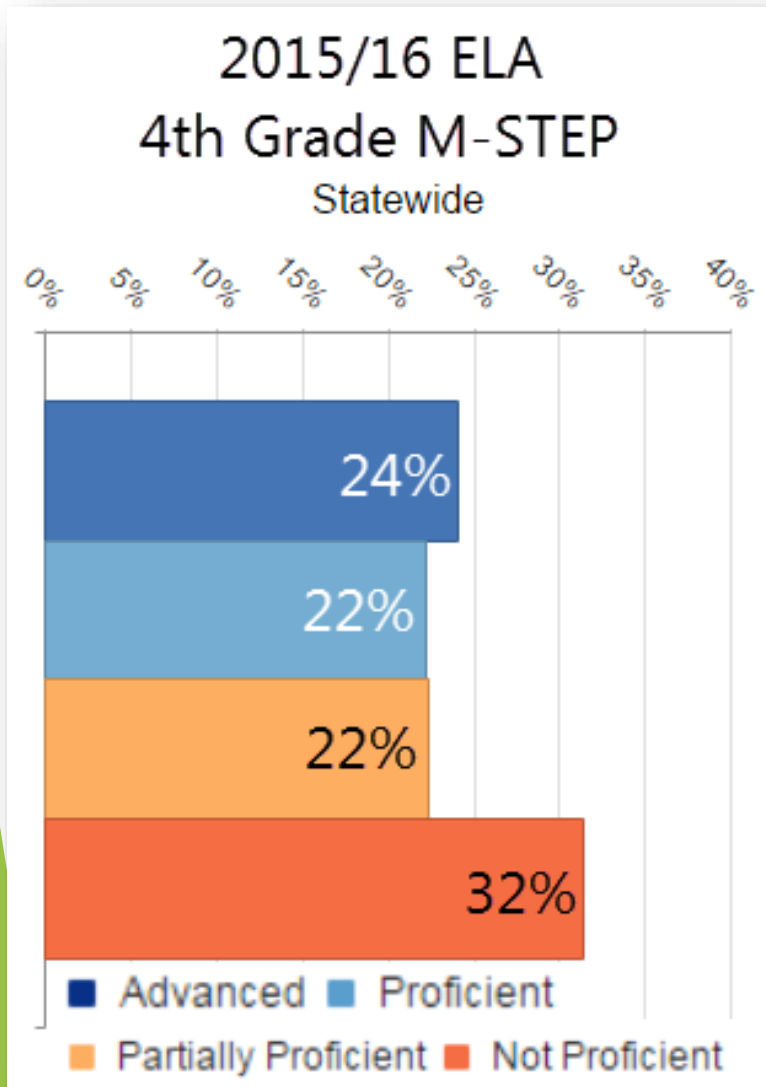
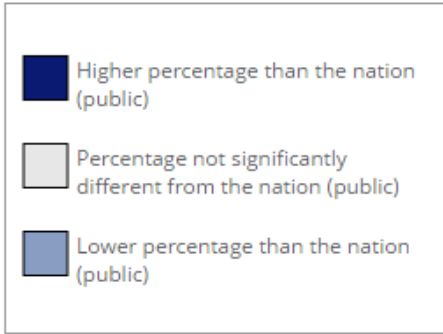


Primary Purpose of NAEP

- ▶ The National Assessment of Educational Progress (NAEP)
- ▶ “The purpose of NAEP is to provide state and national trend data on student achievement in several subjects. It allows comparisons between states and the nation. The NAEP results are considered the ‘Nation’s Report Card.’” - Minnesota.gov website
 - ▶ **EVALUATE** student achievement by states and as a nation based on statistical sampling.
 - ▶ **EVALUATE** academic improvement as a state relative to other states and the nation.
 - ▶ NOT evaluative of school, teacher or student achievement or growth.
 - ▶ **NOT PREDICTIVE** of college or career success.
 - ▶ **NOT INSTRUCTIONAL** reports intended to inform curriculum or instruction of a school or a teacher.

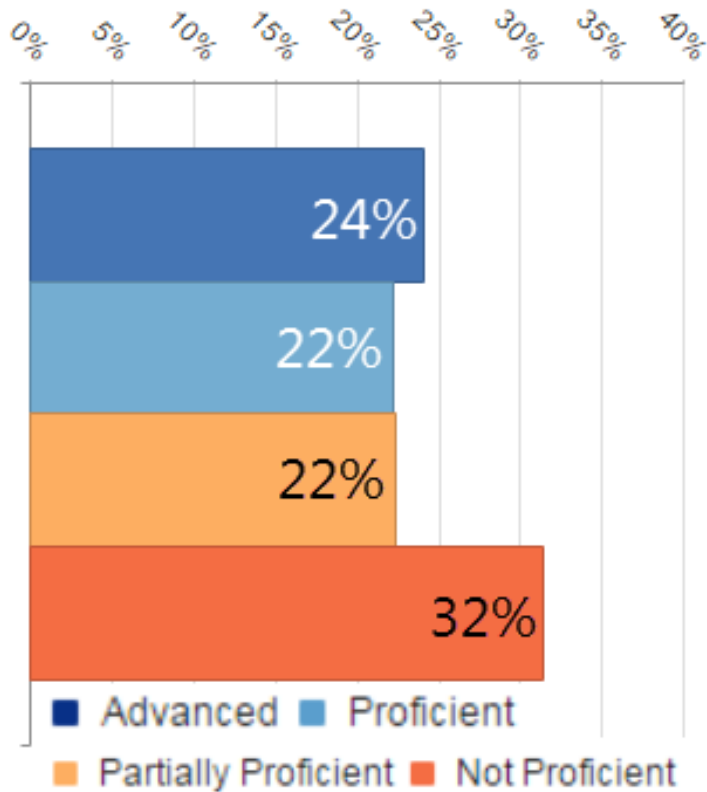


2015 NAEP Results by State for 4th Grade Reading

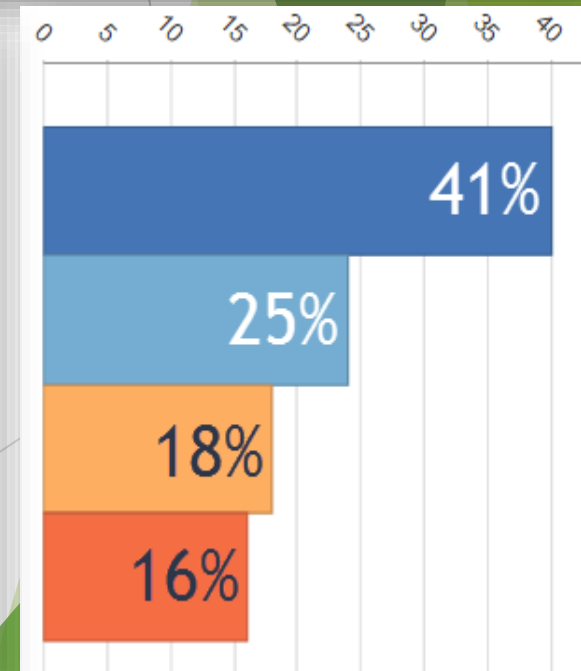
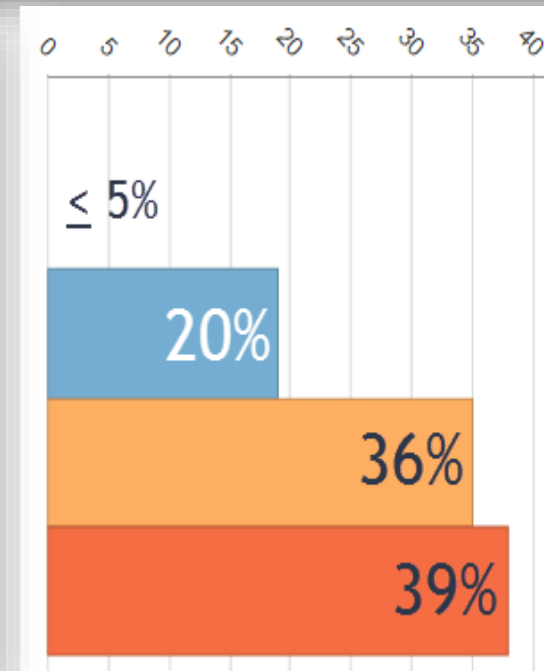
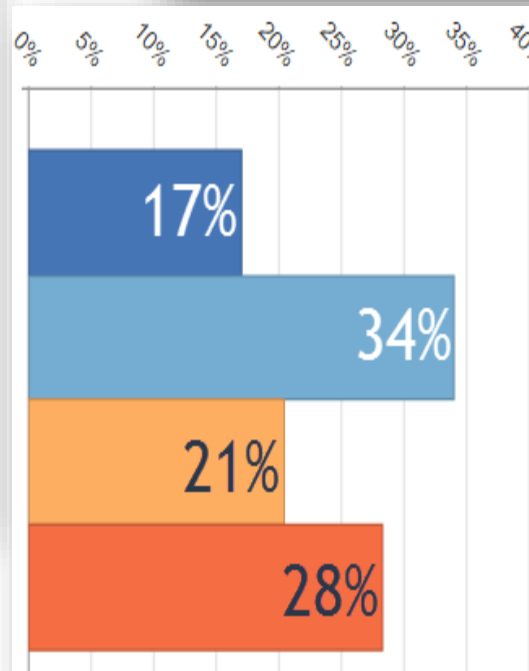


Predicting Academic Achievement

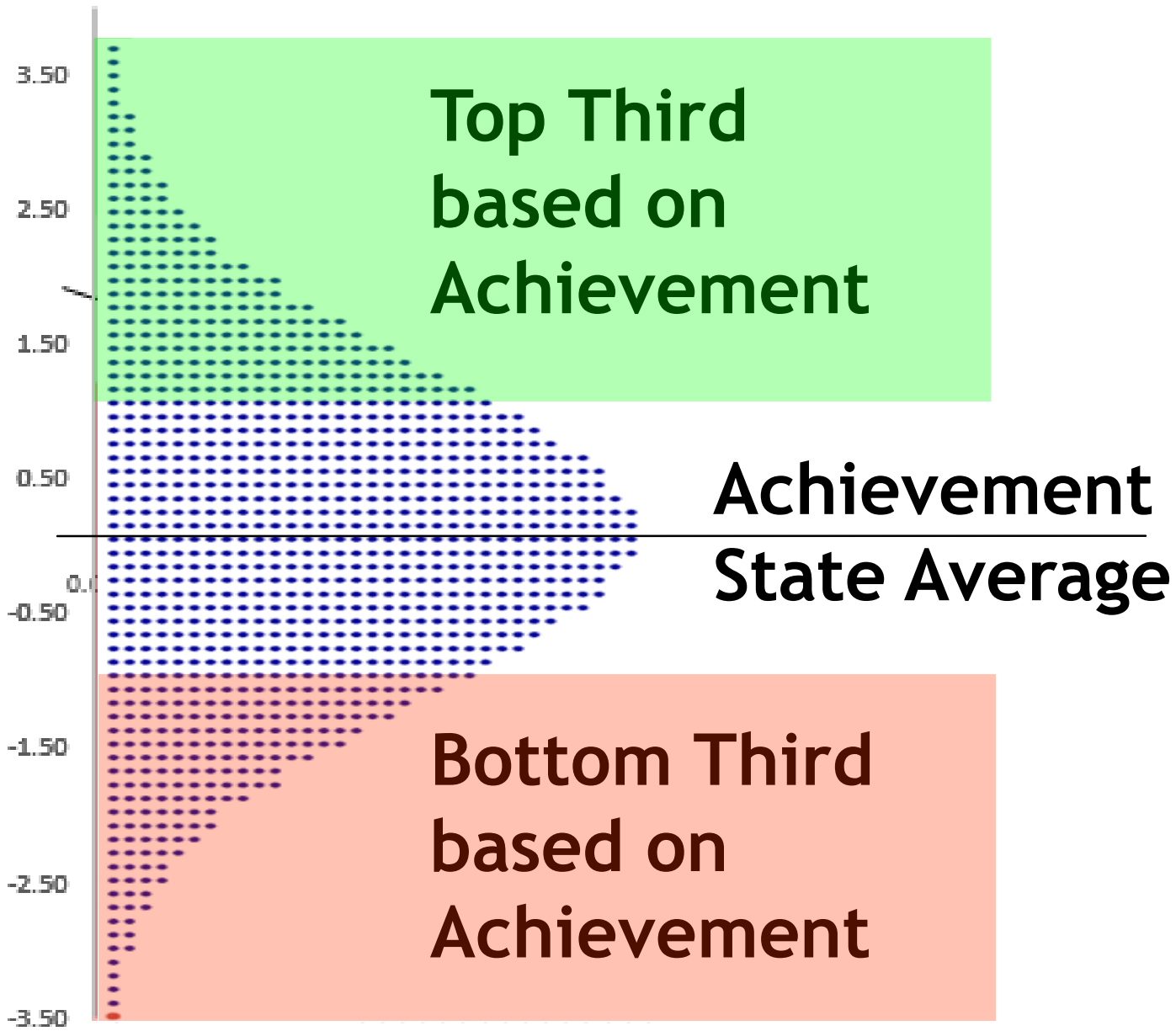
2015/16 ELA
4th Grade M-STEP
Statewide



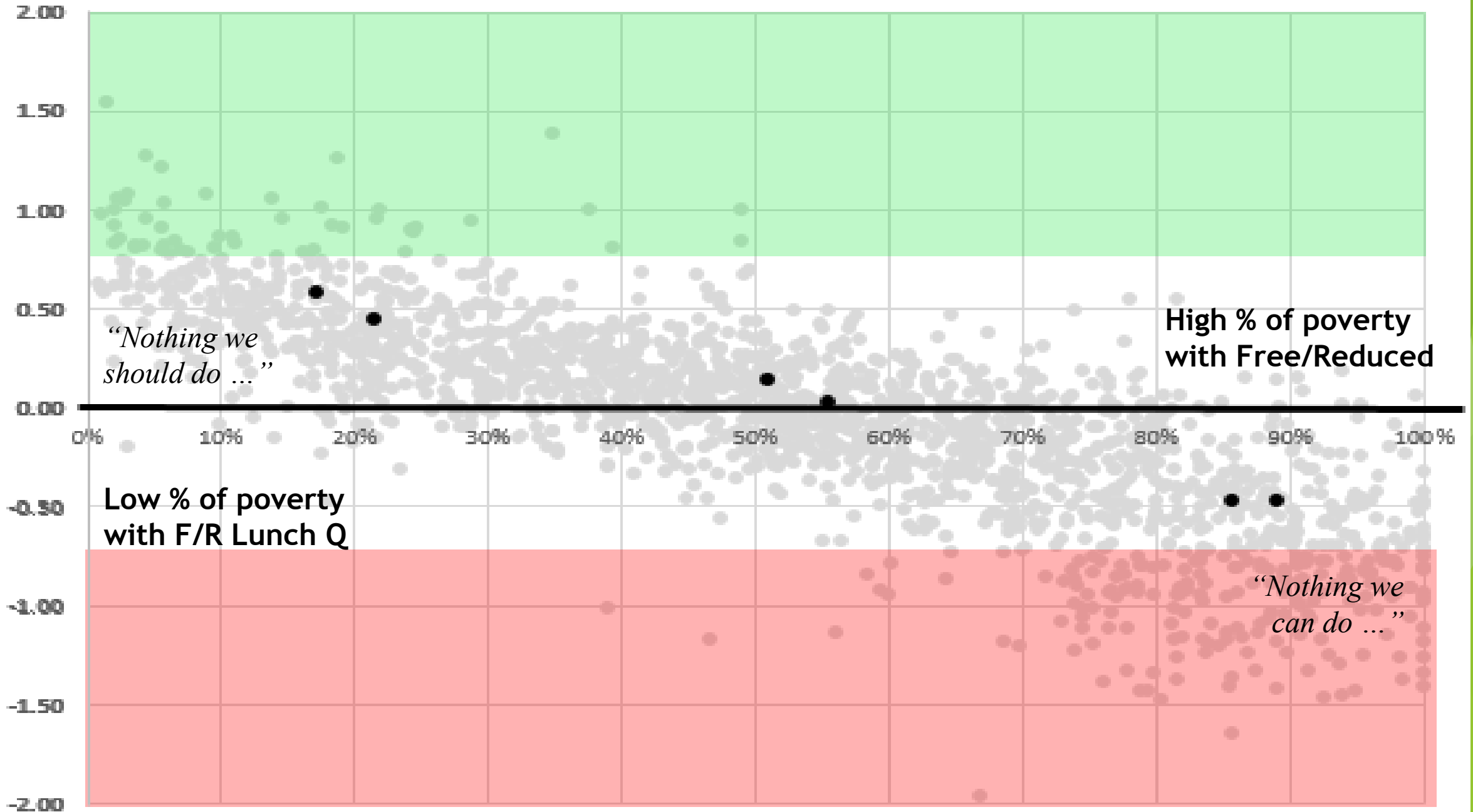
District Name	Building Name	F/R Range
1. Schoolcraft Community School District	Schoolcraft Elementary School	15-30%
2. Portage Public Schools	Lake Center Elementary School	15-30%
3. Galesburg-Augusta Community Schools	Galesburg-Augusta Primary School	50-60%
4. Parchment School District	Parchment Central Elementary School	50-60%
5. Kalamazoo Public Schools	Milwood Elementary School	85-100%
6. Comstock Public Schools	Northeast Middle School	85-100%



2012

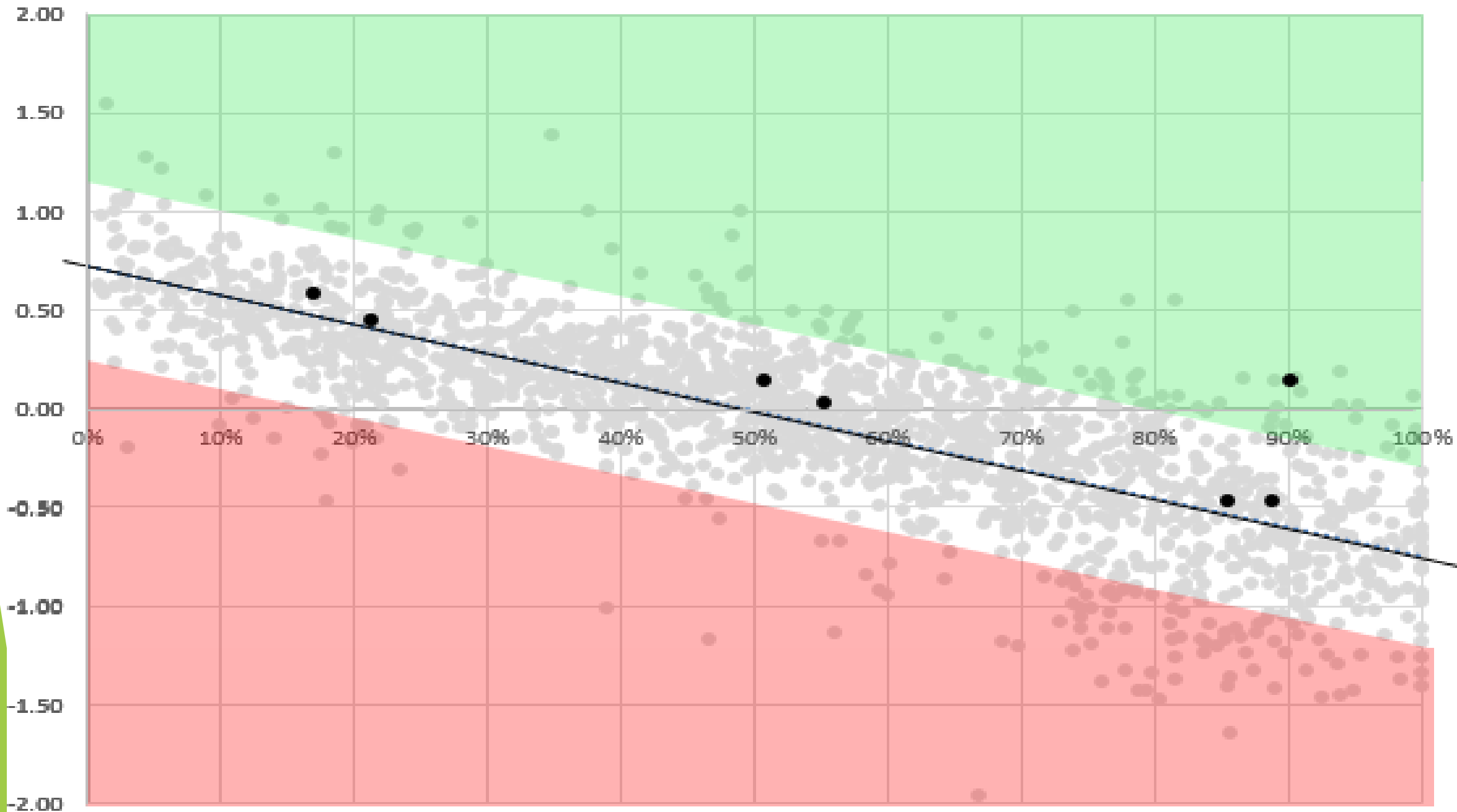


2016 Average ELA Score vs F/R Lunch - Statewide



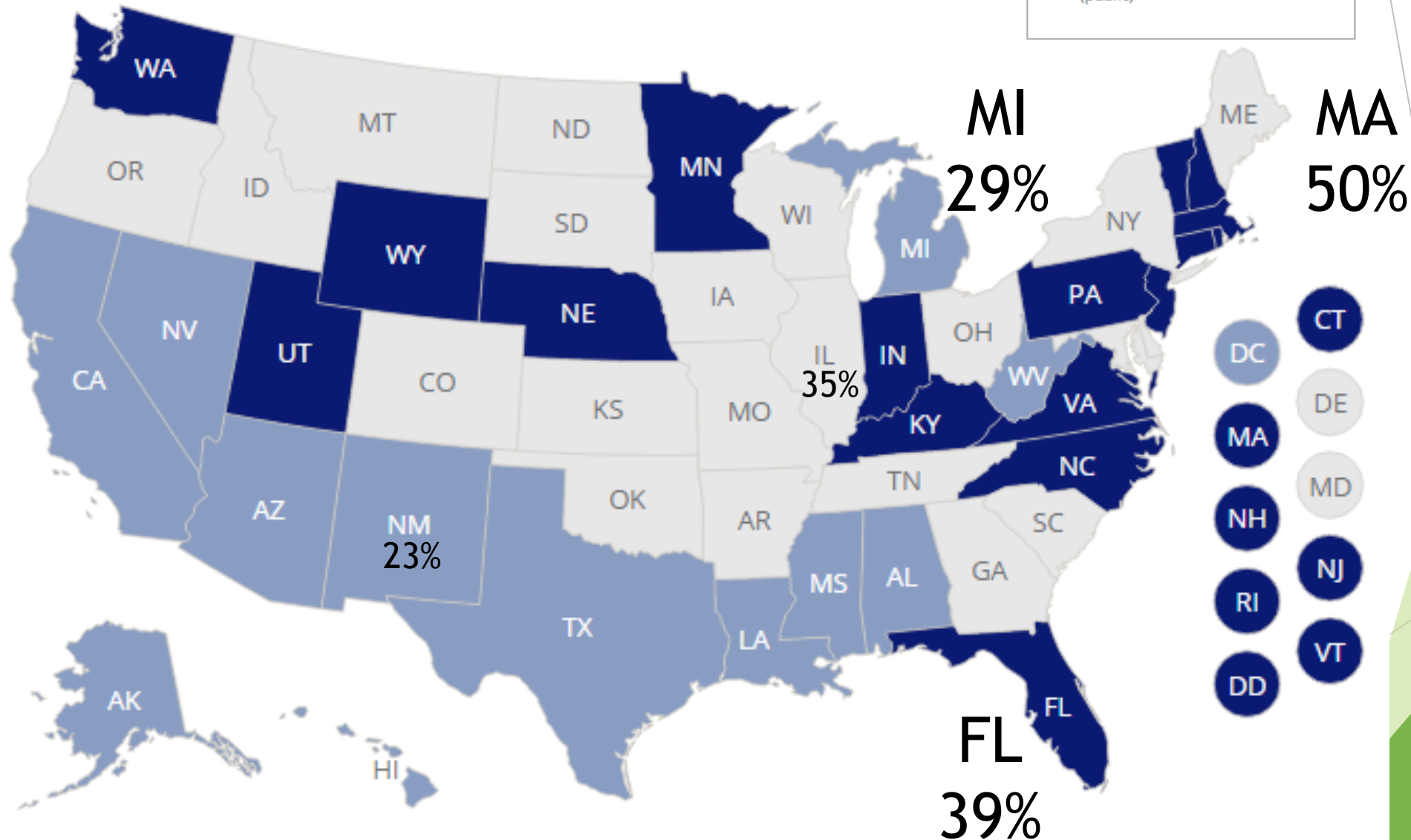
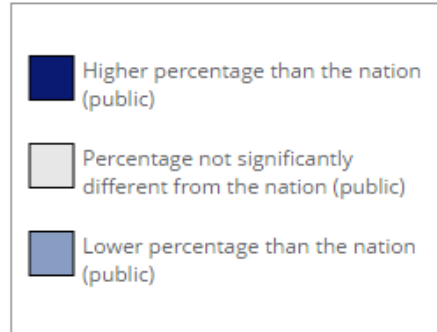
2016 Average ELA Score vs F/R Lunch - Statewide

$$y = -1.475x + 0.7244$$
$$R^2 = 0.6248$$





2015 NAEP Results by State for 4th Grade Reading



NAEP Scores the past 10 years

All figures below show the trend from 2005 to 2015

- ▶ MI F/R scale score increased by 2.8 pts from 201.2 to 204.0 (2015)
- ▶ MI non-F/R scale score increased by 0.3 pts from 227.1 to 227.4

- ▶ Michigan F/R Lunch increased from 37.1% to 46.1% (2015)
- ▶ Michigan scale score dropped from 218.3 to 216.3 (2015)
- ▶ Michigan Proficiency dropped from 32% to 29% (2015)

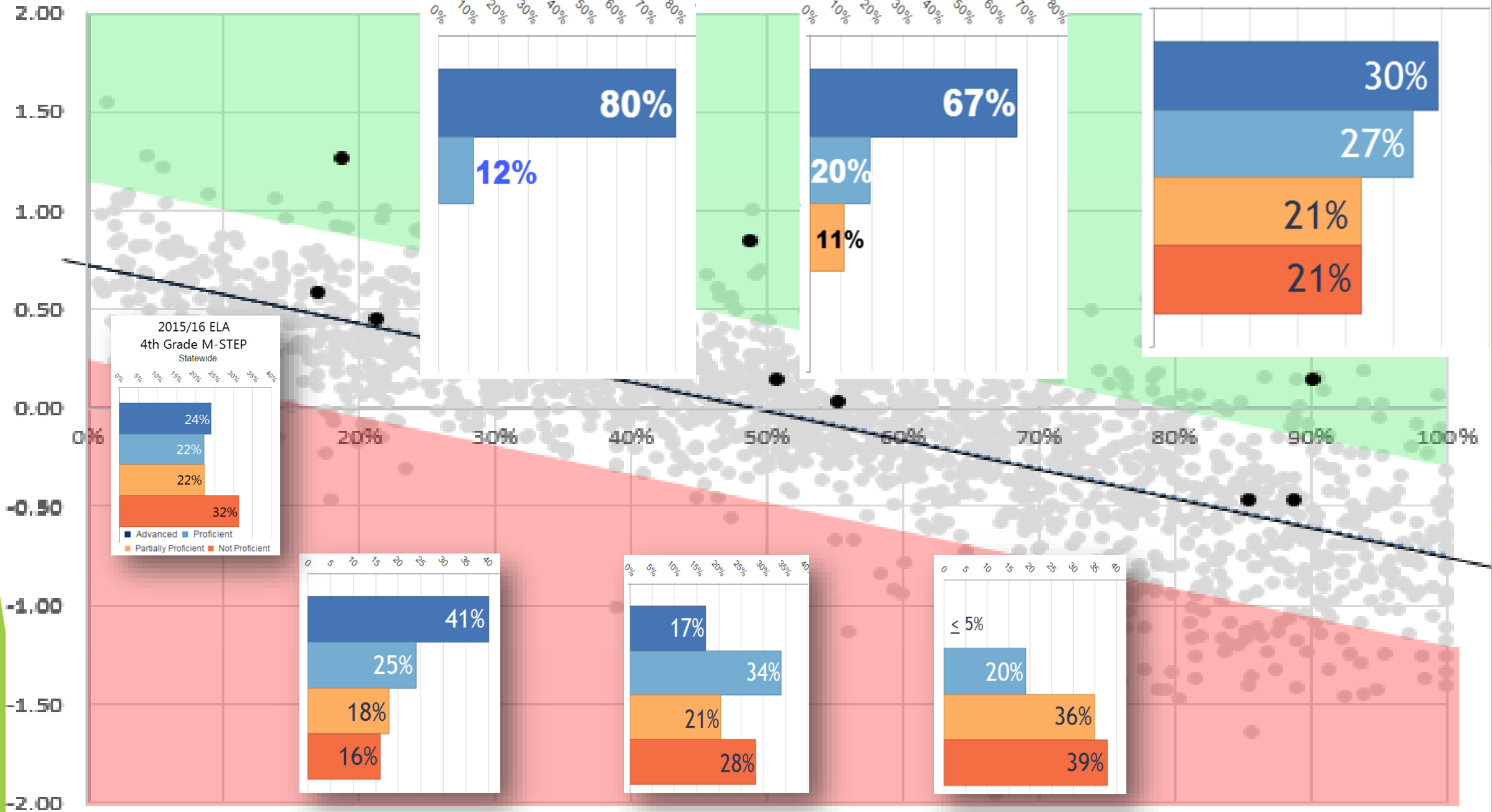
- ▶ Michigan students rank 42nd in 4th grade Reading (2015)
- ▶ MI F/R Lunch students rank 45th in 4th grade Reading (2015)
- ▶ MI non-F/R Lunch student rank 49th in 4th grade Reading (2015)



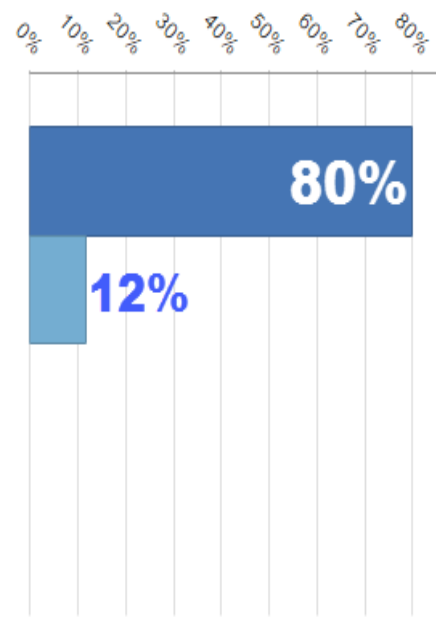
2005 to 2015 NAEP Scale Scores

Student Sample	2005 Reading	Confidence Interval	2015 Reading	Difference 2015-2005	2015 State Ranking
MI Econ. Disadv. (ED)	201.2 (-1.5)	196.5-206.0	204.0 (-5.2)	+2.8 Not significant	45 th
Nat'l ED	202.7	202.2-203.2	209.2	+6.5 Significant	
MI not eligible ED	227.4 (-2.3)	224.9-230.0	227.7 (-9.0)	+0.3 Not significant	49 th
Nat'l not eligible ED	229.7	229.2-230.2	236.7	+7.0 Significant	
MI Total Sample	218.3 (+1.0)	215.2-221.3	216.3 (-5.1)	-2.0 Not significant	42 nd
National Total Sample	217.3	216.9-217.8	221.4	+4.1 Significant	

2016 Average ELA Score

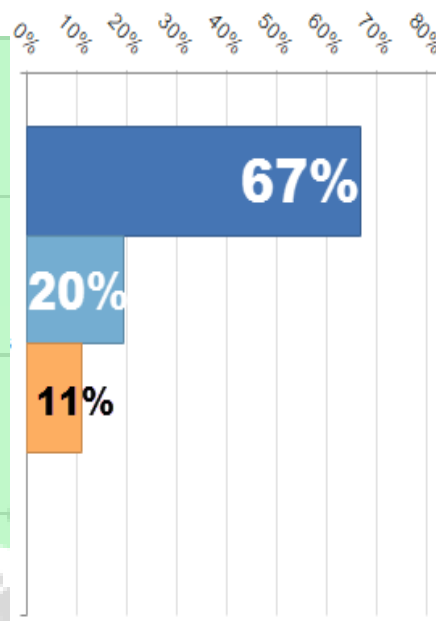


F/R Lunch 20%
Brown Elementary School

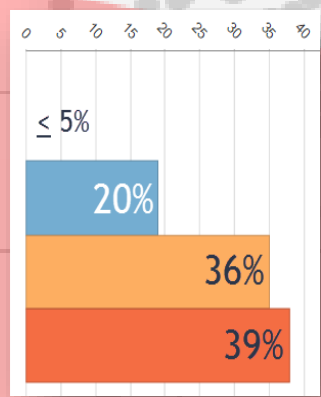
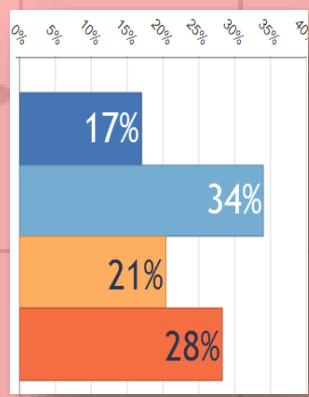
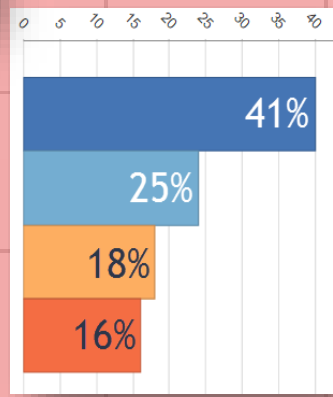
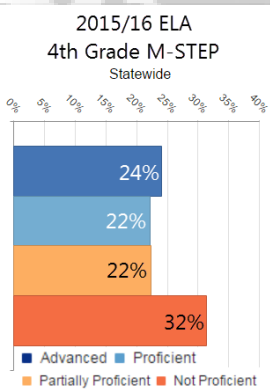
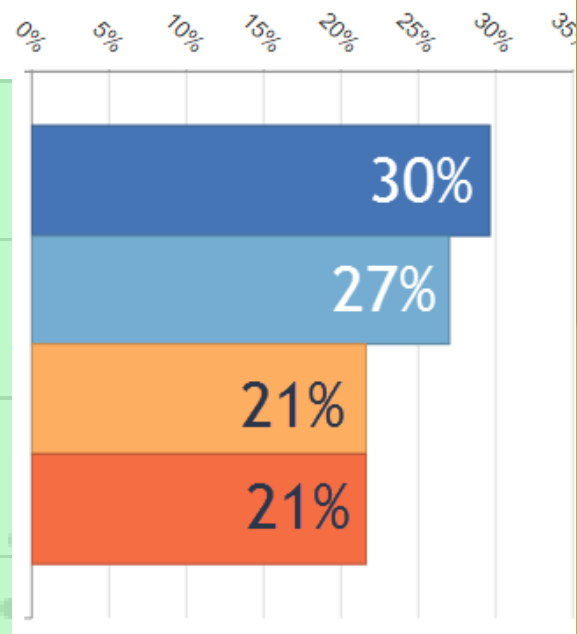


State

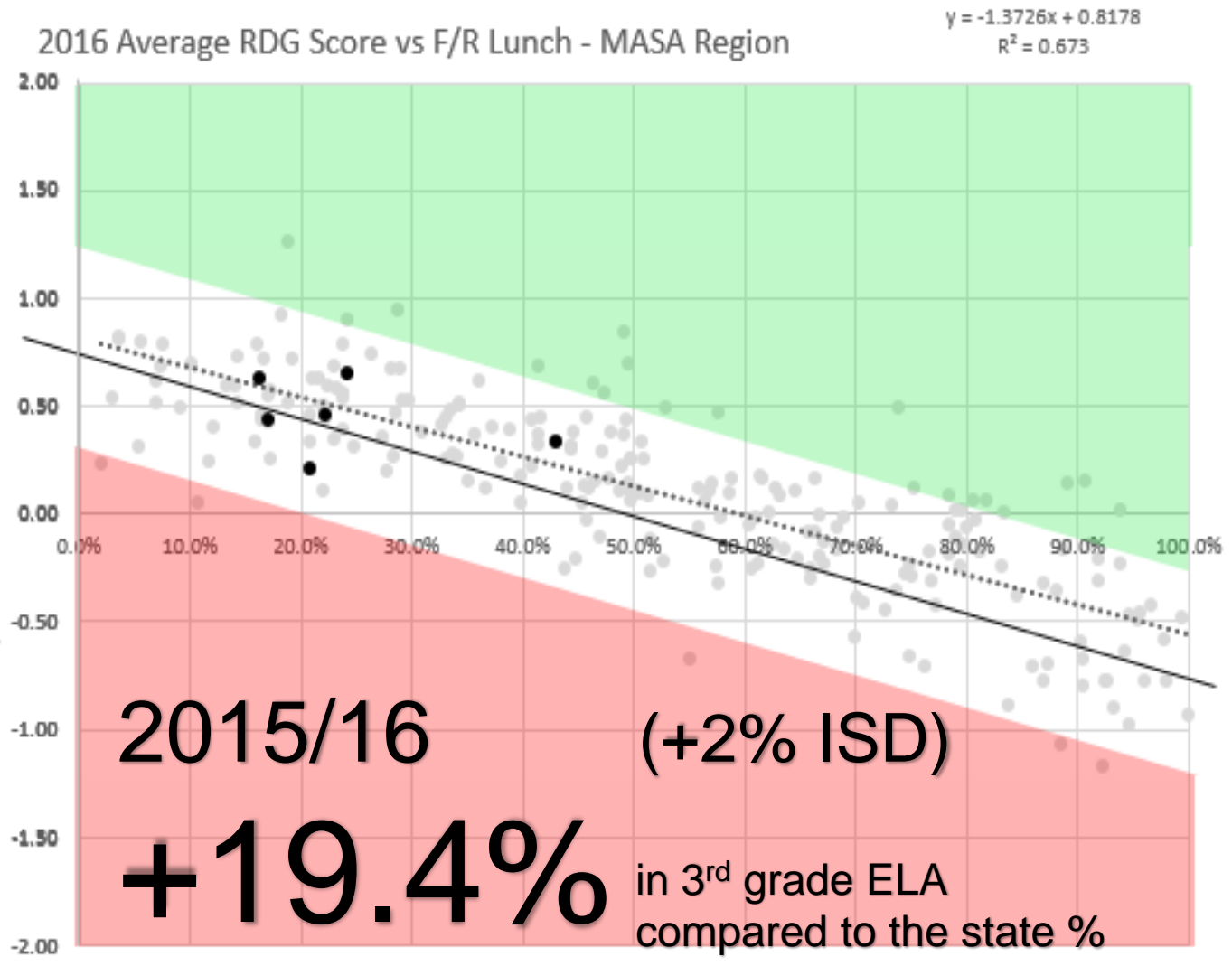
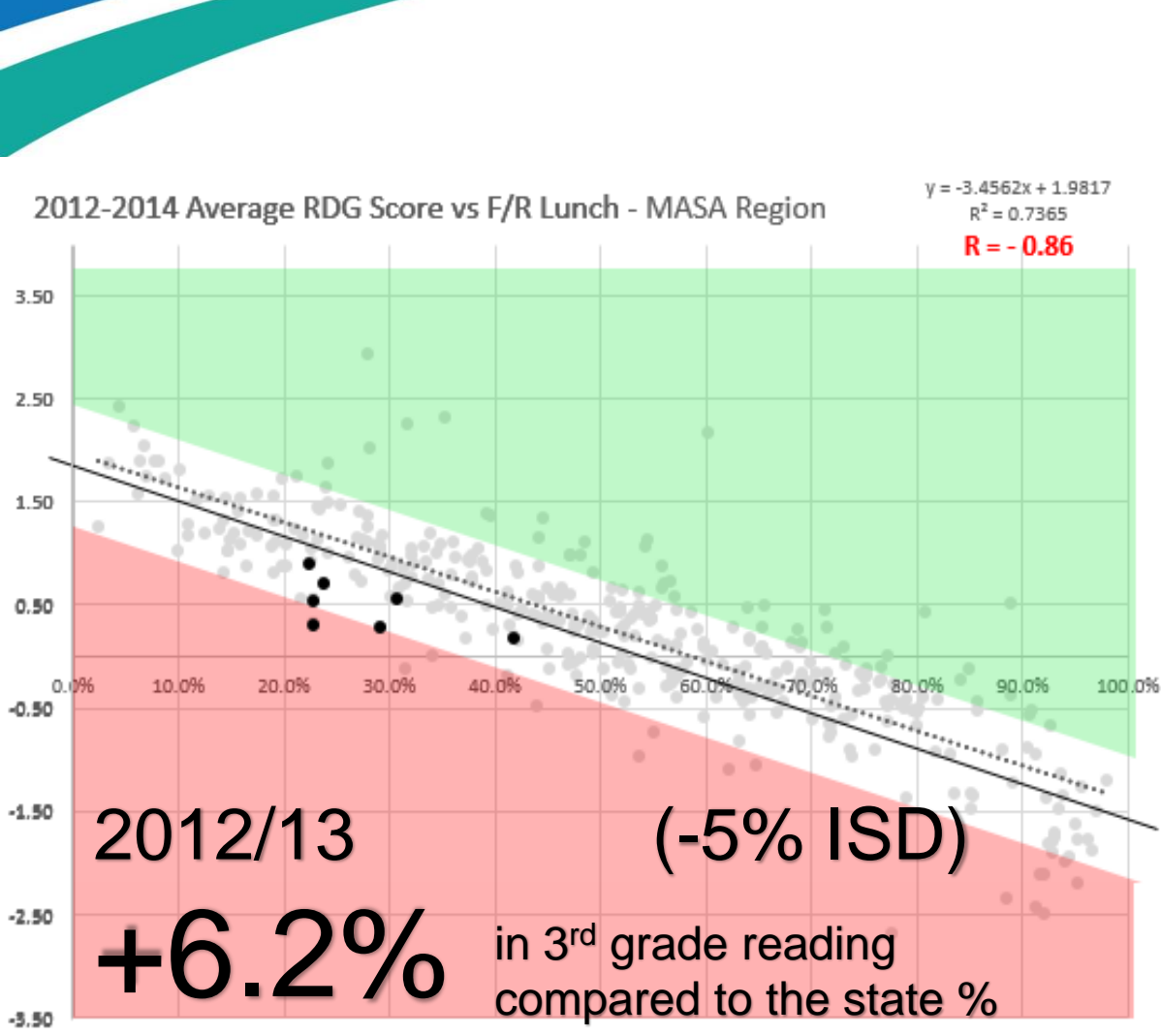
F/R Lunch 50%
Lake Hills Elementary School



West Godwin Elementary School




RNN District then and now...



Practical School Improvement Timeline for Michigan

Search this specific site 

Search 

[Home Page](#)

[What's New Blog](#)

[Getting Started](#)

[Required Reports](#)

[Reading Now](#)

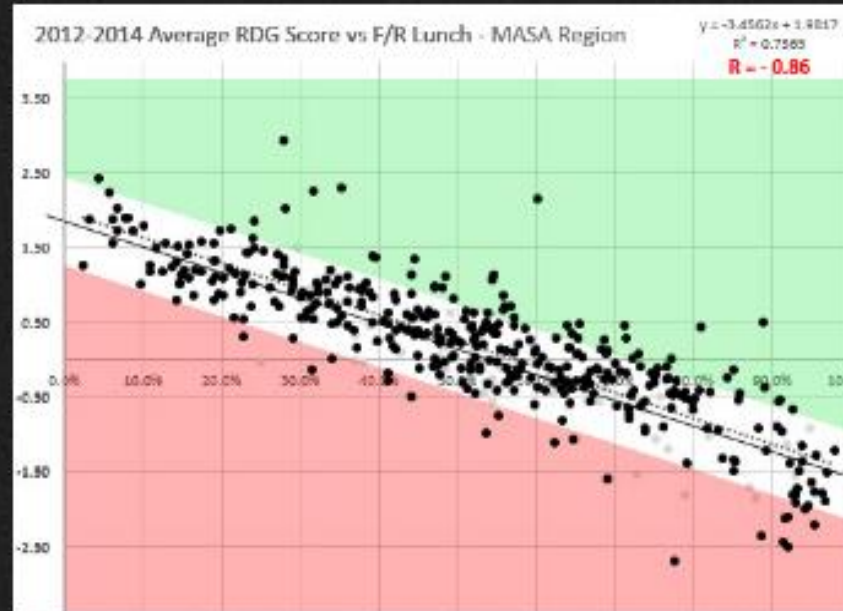
[DATA & Ed Eval](#)

[State/Fed Funds](#)

[Resources](#)

[Promising Practices](#)

[Feedback & Contact](#)



Reading Now Network: Collaboration, Data & Best Practices

RNN Results in 2016: [School News Network](#); How the [Reading Now Network \(RNN\)](#) (PDF) started in 2013.

The RNN identified five schools to study based on a graph similar to the one above. Research has been well documented showing the correlation between socio-economic status and achievement, especially in reading. The graph on the left shows all the schools in West Michigan (MAISA Region 3) that participated in the State Reading Test (MEAP) from 2011/12 to 2013/14, each dot represents one school. As poverty, based on Free/Reduced lunch, increases (from left to right), the data clearly shows achievement (average standardized scale score) drops rapidly (as seen by the downward slope). The white bar with the "best fitting line" running in the middle represents this pattern.

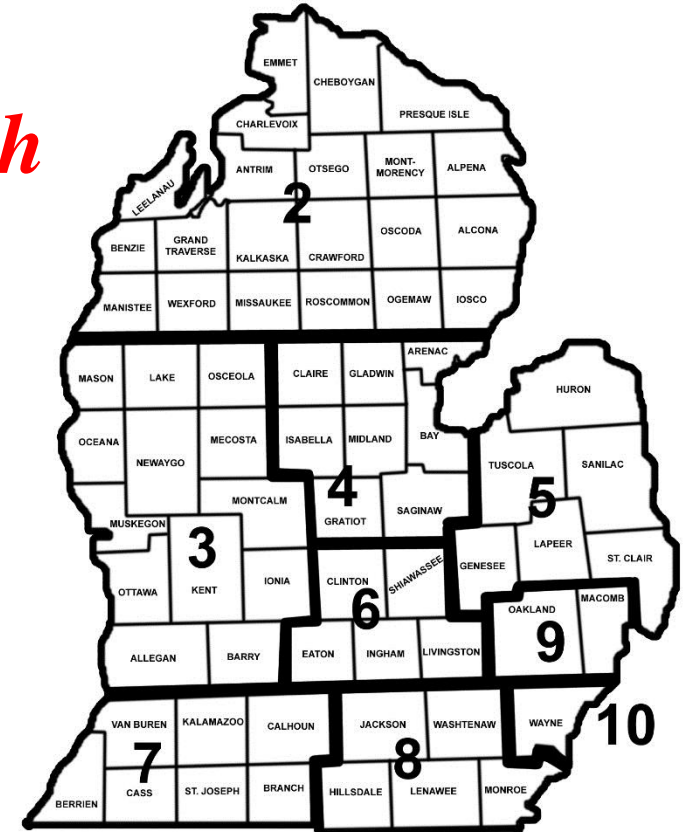
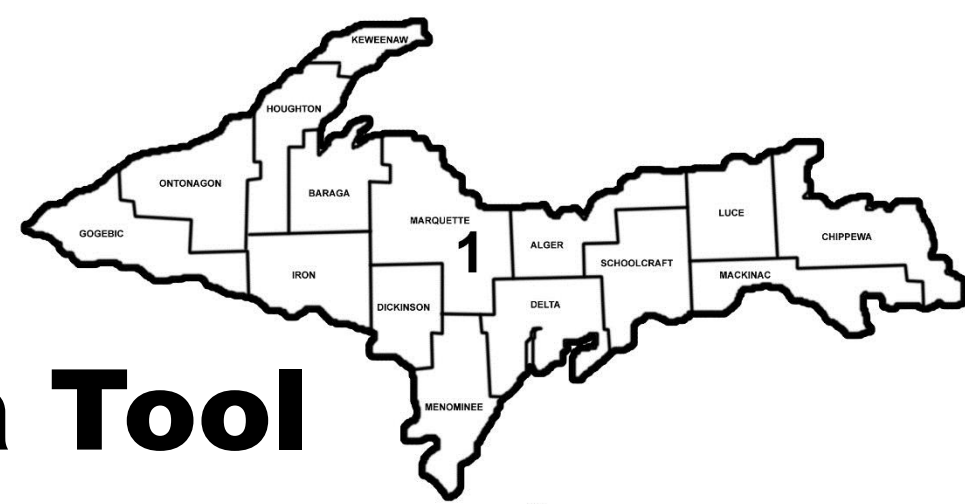
Updated RNN Data Tool

“From everyone who has been given much, much will be required; and to whom they entrusted much, of him they will ask all the more.”

- Jesus of Nazareth (Luke 12:48 NASB)

“With great power comes great responsibility”

- Uncle Ben from Spiderman series



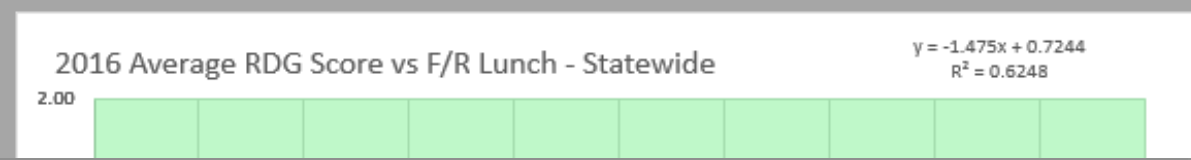
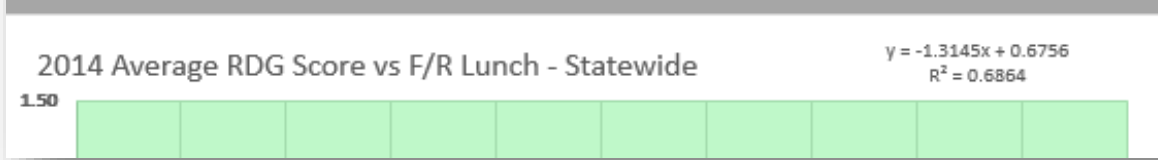
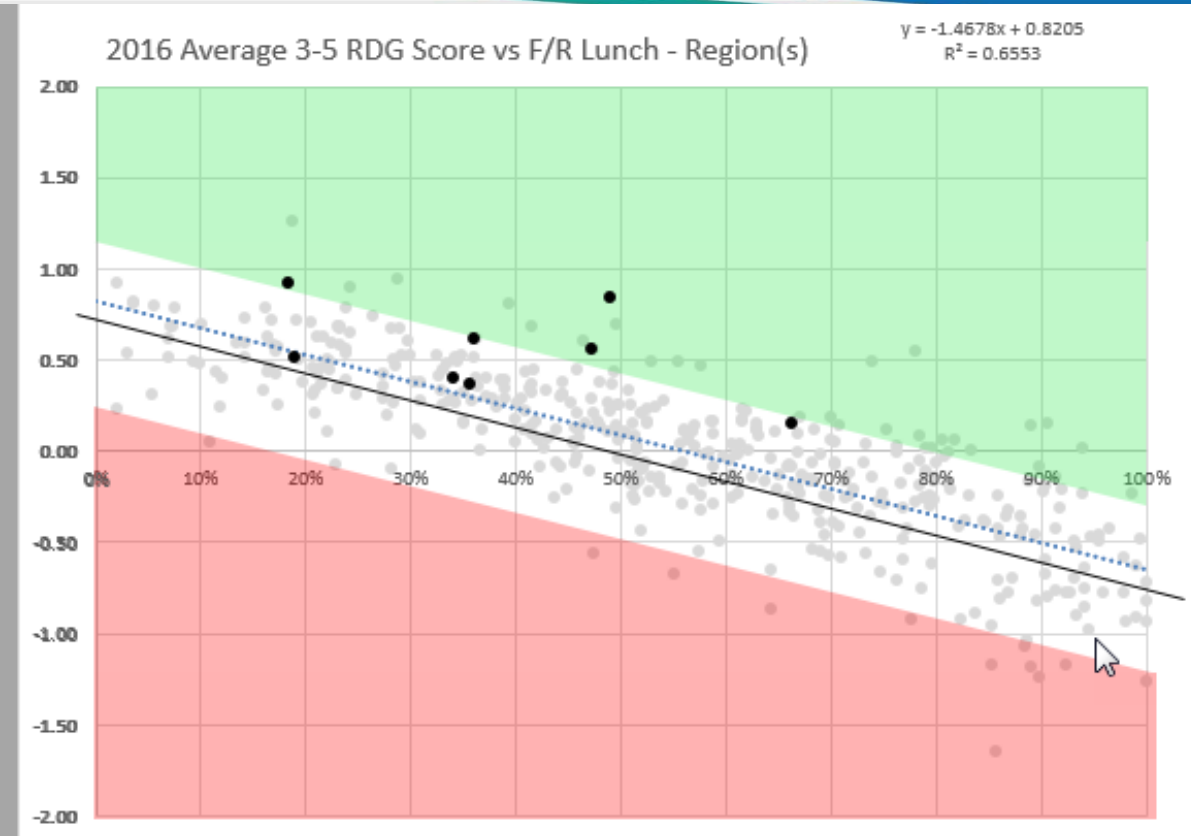
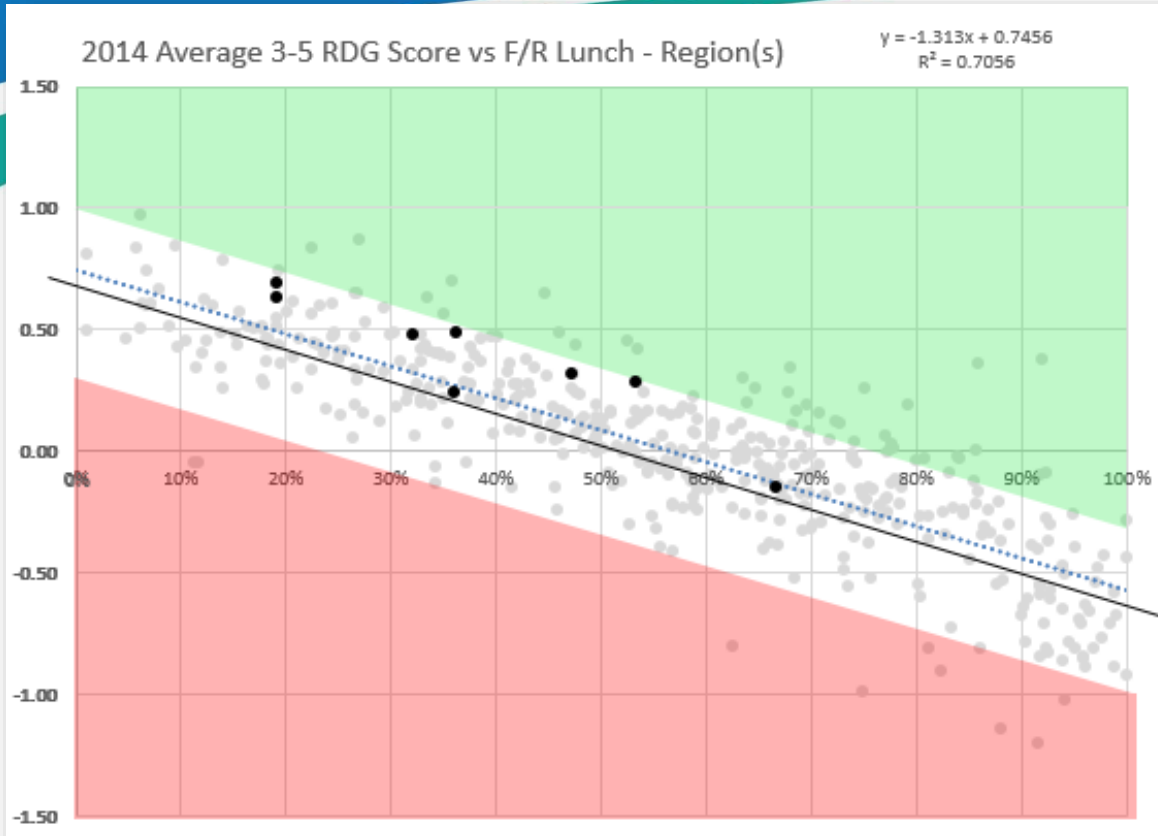
Use the Tool to Select a District

	A	B	C	D	E	F	H	J	K	L	M	N	O	P	
1	MASA	ISD Name	Dcode	District Name	Bcode	Building Name	F/R.3-5.2014	F/R.3-5.	RDG.3-5	ELA.3-5.	F/R Range	Resid.3-5.	Resid.3-5	Diff.E.35	MT
4	3	Ottawa Area ISD	70010	Grand Haven Area Public Sch	6271	Lake Hills Elementary School	53.33%	48.98%	0.2886	0.8466	40-50%	0.314	0.846	0.532	
19	3	Ottawa Area ISD	70010	Grand Haven Area Public Sch	5154	Griffin Elementary School	47.22%	47.24%	0.3200	0.5595	40-50%	0.265	0.533	0.268	
29	3	Ottawa Area ISD	70010	Grand Haven Area Public Sch	3297	Rosy Mound School	19.05%	18.25%	0.6374	0.9216	15-30%	0.212	0.466	0.254	
40	3	Ottawa Area ISD	70010	Grand Haven Area Public Sch	2407	Mary A. White School	36.17%	36.04%	0.4924	0.6198	30-40%	0.292	0.427	0.135	
42	3	Ottawa Area ISD	70010	Grand Haven Area Public Sch	1227	Ferry School	66.67%	66.34%	-0.1406	0.1633	60-70%	0.060	0.420	0.360	
167	3	Ottawa Area ISD	70010	Grand Haven Area Public Sch	1454	White Pines Intermediate School	32.04%	33.97%	0.4839	0.4079	30-40%	0.229	0.185	-0.044	
174	3	Ottawa Area ISD	70010	Grand Haven Area Public Sch	3240	Robinson School	35.94%	35.59%	0.2425	0.3750	30-40%	0.039	0.176	0.137	
254	3	Ottawa Area ISD	70010	Grand Haven Area Public Sch	2985	Peach Plains School	18.99%	18.79%	0.6954	0.5221	15-30%	0.269	0.074	-0.195	
572	3	Ottawa Area ISD	70010	Grand Haven Area Public Sch	8457	Lakeshore Middle School									
607															
608															

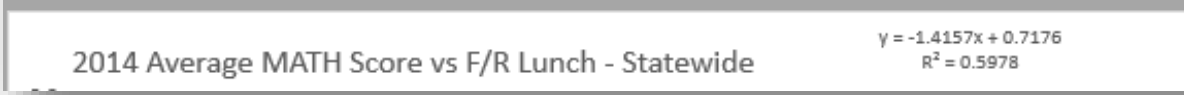
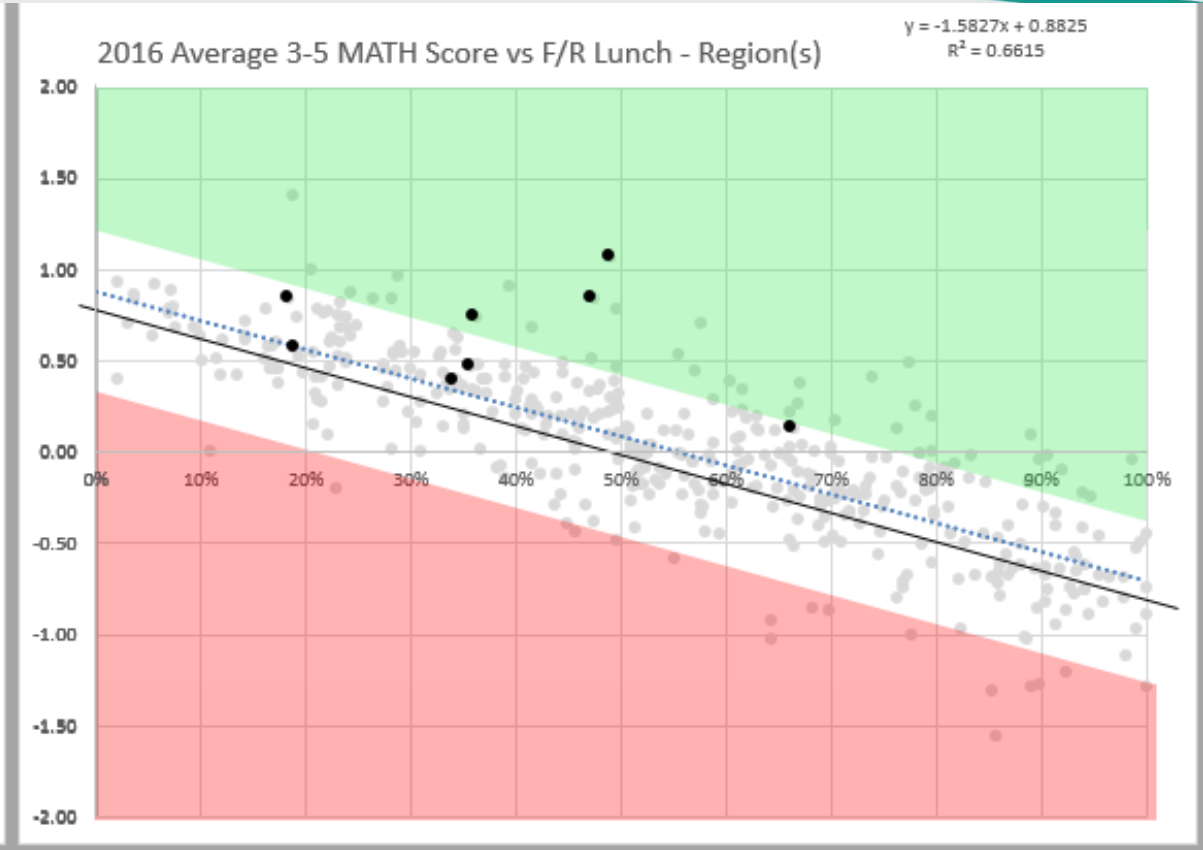
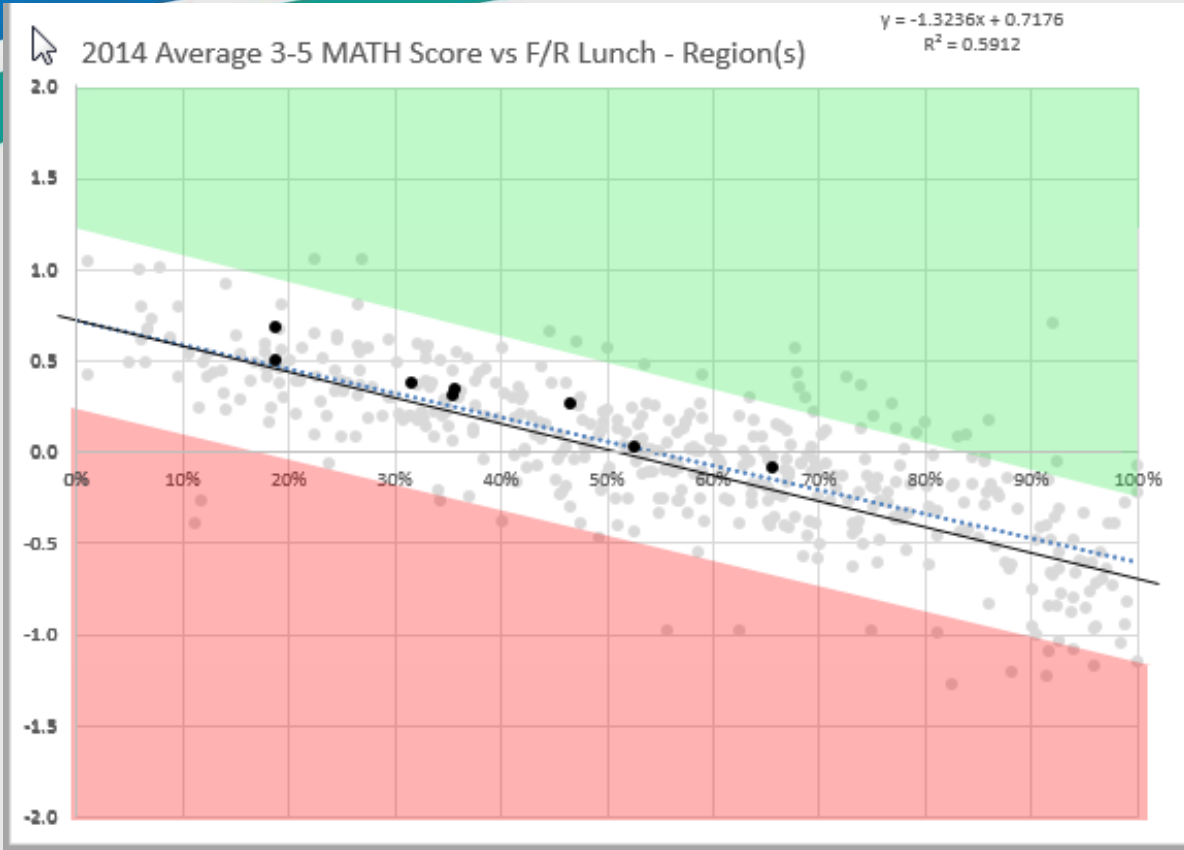
Reading/ELA Data available 3-5 and 6-8.

Math Data also available 3-5 and 6-8.

Tracking Reading or ELA



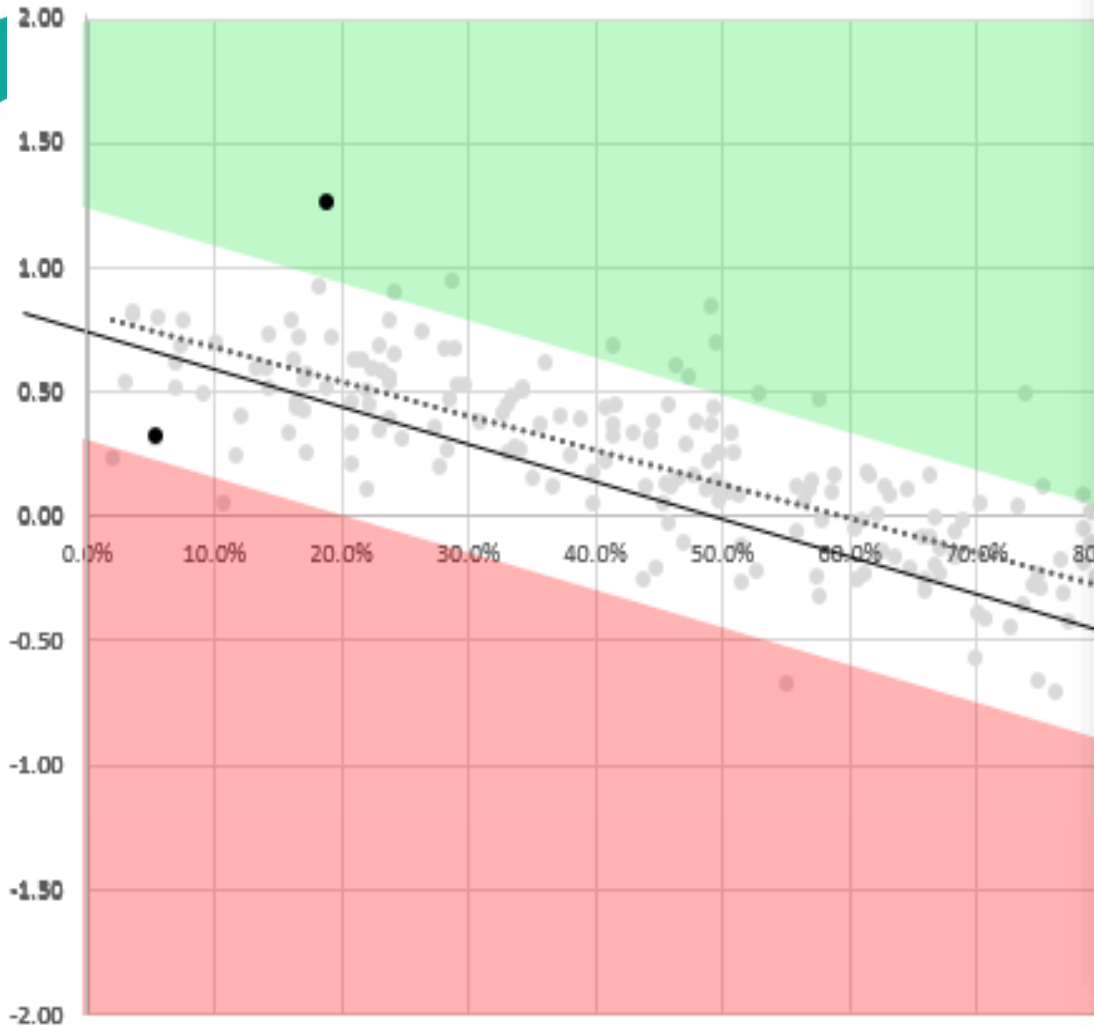
Tracking Mathematics



2013/14 and 2015/16 Math Graphs (6-8 available as well)

Comparing Similar Schools

2016 Average RDG Score vs F/R Lunch - MASA Region



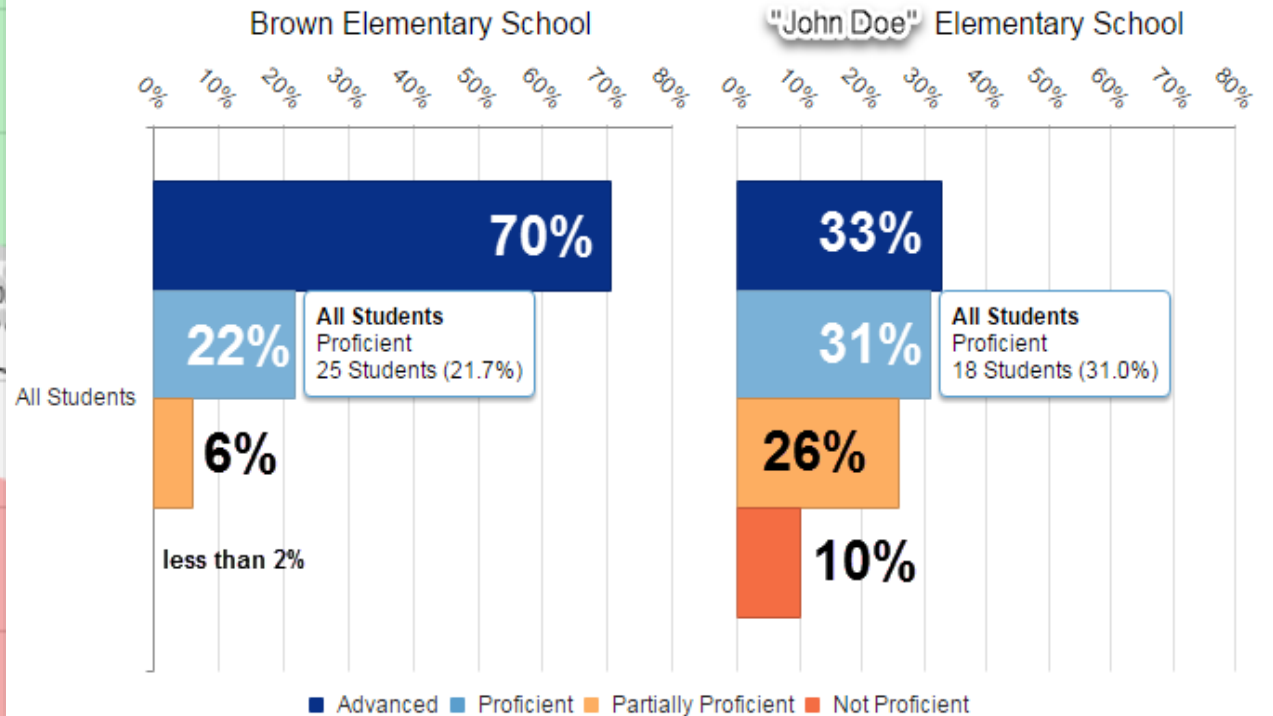
Grades 3-8 Assessments: Performance Level Snapshot

Brown Elementary School (00476) and "John Doe" Elementary School (): 2015-16 / M-STEP / 3rd Grade Content / ELA / All Students

Snapshot Trend

[Show Student Count View](#)

Percent of Total

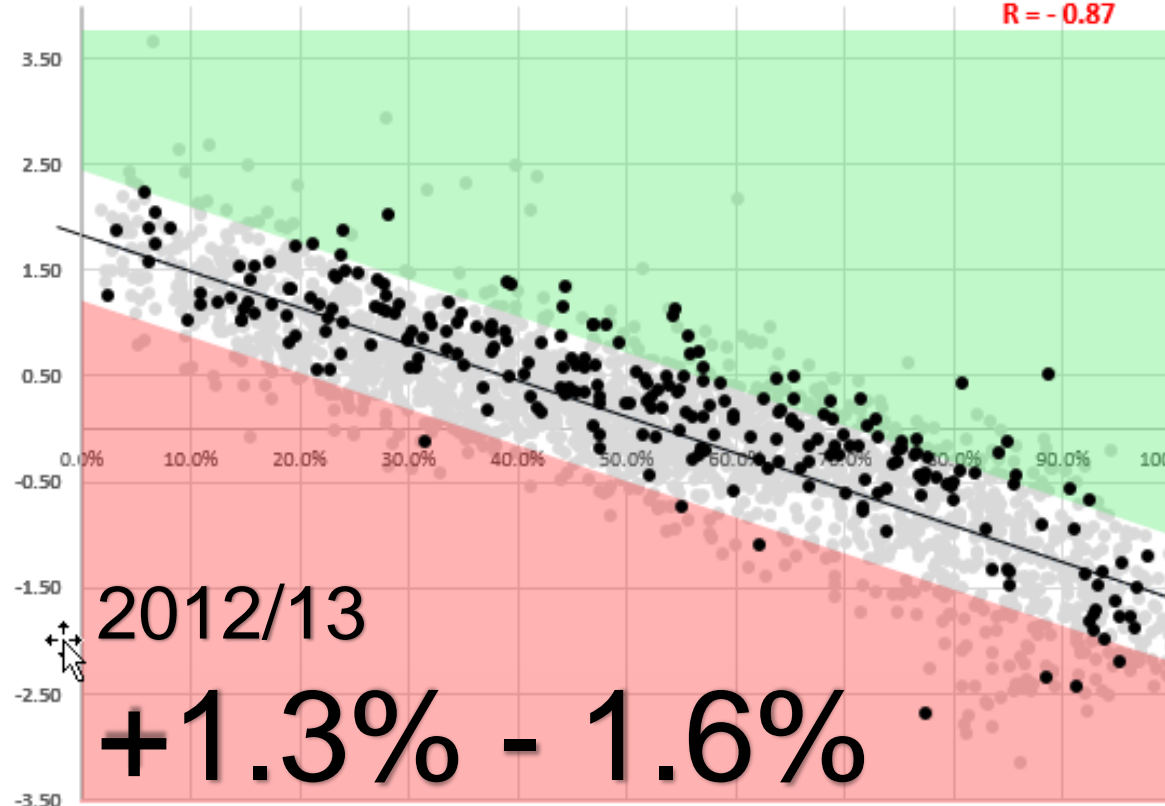


	B	C	D	E	F	H	J	K	L	M	N	O	P	
	ISD Name	Dcode	District Name	Bcode	Building Name	F/R.3-5.2014	F/R.3-5.	RDG.3-5	ELA.3-5	F/R Range	Resid.3-5	Resid.3-5	Diff.E.35	
3	Kent ISD	41040	Byron Center Public Schools	476	Brown Elementary School	26.89%	18.1%	Sort A to Z			0.546	0.811	0.26	
3	Ottawa Area ISD	70190	Hudsonville Public School Dis	1886	Jamestown Elementary School	22.38%	28.1%	Sort Z to A			0.459	0.647	0.18	
3	Ottawa Area ISD	70070	West Ottawa Public School D	2114	Lakewood Elementary School	22.58%	24.1%	Sort by Color			0.070	0.531	0.46	
3	Ottawa Area ISD	70010	Grand Haven Area Public Sch	3297	Rosy Mound School	19.05%	18.1%	Clear Filter From "F/R Range"			0.212	0.466	0.25	
3	Kent ISD	41040	Byron Center Public Schools	9170	Countryside Elementary School	32.79%	23.1%	Filter by Color			0.176	0.416	0.24	
3	Kent ISD					24.60%	26.1%	Text Filters			0.139	0.410	0.27	
3	Ottawa Area ISD	70175	Jenison Public Schools	5740	Pinewood School	26.54%	28.1%	Search			0.014	0.376	0.36	
3	Kent ISD	41170	Lowell Area Schools	76	Alto Elementary School	22.41%	28.1%	Search			0.187	0.367	0.18	
7	Calhoun ISD	13110	Marshall Public Schools	9245	Walters Elementary	29.34%	29.1%	<input checked="" type="checkbox"/> (Select All) <input checked="" type="checkbox"/> 0-15% <input checked="" type="checkbox"/> 15-30% <input type="checkbox"/> 30-40% <input type="checkbox"/> 40-50% <input type="checkbox"/> 50-60% <input type="checkbox"/> 60-70% <input type="checkbox"/> 70-85% <input type="checkbox"/> 85-100% <input type="checkbox"/> (Blanks)			0.304	0.323	0.01	
3	Kent ISD	41050	Caledonia Community Schoo	492	Caledonia Elementary School	17.68%	22.1%	OK			0.063	0.304	0.24	
3	Kent ISD	41040	Byron Center Public Schools	8667	Robert L. Nickels Intermediate Sch	26.44%	23.1%	Cancel			0.149	0.302	0.15	
3	Ottawa Area ISD	70190	Hudsonville Public School Dis	1263	Forest Grove Elementary School	13.95%	16.1%				0.295	0.302	0.00	
7	Berrien RESA	11020	St. Joseph Public Schools	992	Clarke School	19.27%	23.1%				0.013	0.290	0.27	
3	Ottawa Area ISD	70300	Spring Lake Public Schools	8825	Spring Lake Intermediate School	15.38%	20.1%				-0.037	0.283	0.32	
3	Ottawa Area ISD	70350	Zeeland Public Schools	1146	Adams Elementary School	26.23%	24.1%				-0.277	0.281	0.55	
3	Ottawa Area ISD	70190	Hudsonville Public School Dis	224	Bauer Elementary School	19.23%	19.1%				0.322	0.277	-0.04	
3	Muskegon Area ISD	61230	North Muskegon Public Scho	2741	North Muskegon Elementary Scho	29.75%	29.1%				0.197	0.246	0.04	
3	Ottawa Area ISD	70190	Hudsonville Public School Dis	79	Alward Elementary School	18.98%	16.1%				0.088	0.238	0.14	
3	Kent ISD	41040	Byron Center Public Schools	5260	Marshall Elementary School	24.47%	21.1%				0.129	0.230	0.10	
3	Allegan Area Educati	3020	Otsego Public Schools	4851	Alamo Elementary School	32.08%	29.1%				0.088	0.230	0.14	
3	Kent ISD	41110	Forest Hills Public Schools	8911	Goodwillie Environmental School	6.00%	2.00%		0.9706	0.9210	0-15%	0.374	0.224	-0.14
3	Ottawa Area ISD	70300	Spring Lake Public Schools	1892	Jeffers Elementary School	25.00%	21.05%		0.4171	0.6367	15-30%	0.070	0.222	0.15
3	Ottawa Area ISD	70300	Spring Lake Public Schools	1704	Holmes Elementary School	20.62%	14.21%		0.6155	0.7351	0-15%	0.211	0.219	0.00
7	Kalamazoo RESA	39140	Portage Public Schools	81	Amberly Elementary School	34.26%	28.21%		0.4085	0.5120	15-30%	0.183	0.204	0.02
3	Ottawa Area ISD	70070	West Ottawa Public School D	4401	Waukazoo Elementary School	22.90%	22.36%		0.4408	0.5973	15-30%	0.066	0.202	0.13
3	Ottawa Area ISD	70190	Hudsonville Public School Dis	1787	Park Elementary School	17.68%	23.21%		0.5132	0.5834	15-30%	0.070	0.201	0.13
3	Ottawa Area ISD	70175	Jenison Public Schools	225	Bauerwood School	17.62%	23.68%		0.2986	0.5665	15-30%	-0.145	0.191	0.33
3	Kent ISD	41090	East Grand Rapids Public Sch	393	Breton Downs School	6.57%	7.54%		0.7412	0.7953	0-15%	0.152	0.181	0.02
3	Kent ISD	41050	Caledonia Community Schoo	5067	Dutton Elementary School	27.78%	28.49%		0.3382	0.4741	15-30%	0.028	0.170	0.14
3	Ottawa Area ISD	70175	Jenison Public Schools	6169	Rosewood School	26.74%	23.81%		0.6550	0.5355	15-30%	0.331	0.162	-0.16
3	Kent ISD	41110	Forest Hills Public Schools	14	Ada Elementary School	7.79%	5.44%		0.6665	0.8052	0-15%	0.093	0.160	0.06

Region 3 then and now...

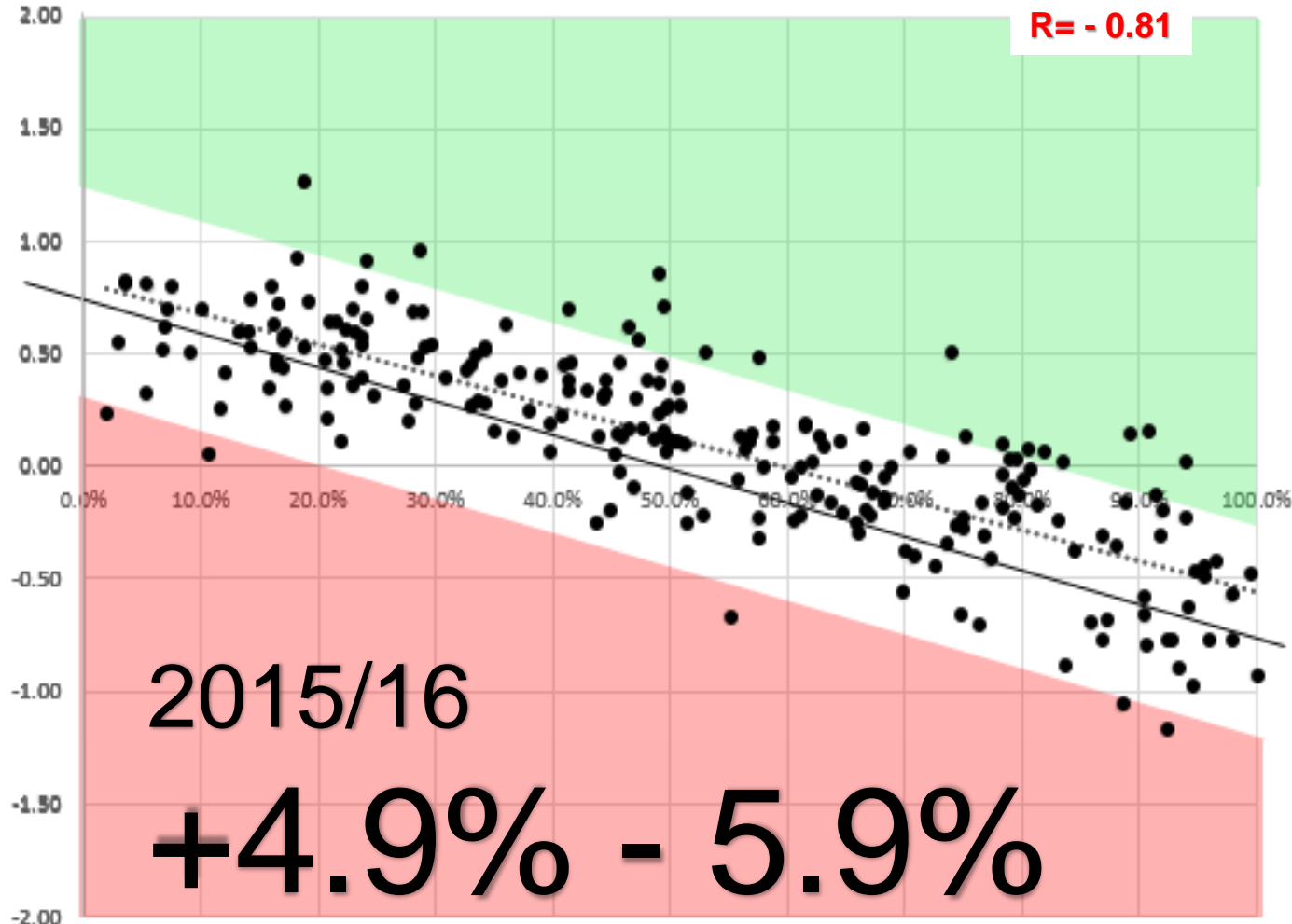
2012-2014 Average RDG Score vs F/R Lunch - Statewide

$y = -3.4221x + 1.8242$
 $R^2 = 0.7575$
 $R = -0.87$



2016 Average RDG Score vs F/R Lunch - MASA Region

$y = -1.3726x + 0.8178$
 $R^2 = 0.673$
 $R = -0.81$



Statewide Impact?

- Region 3 increased from 1.6 – 5.9%
- Represents 915 more students in 3rd grade who are proficient in Region 3.
- IF statewide the red schools moved up to the line, the schools on the line moved up to the green:
 - High poverty schools: From 25% to 52% proficient
 - State Average: From 43% to 70% proficient
 - Low poverty schools: From 65% to 92% proficient
 - 27% statewide would mean over 30,000 more students proficient

